

## Errata and Corrigenda

---

FEBS 16806

Corrigendum to: **Compositional compartmentalization of the nuclear genomes of *Trypanosoma brucei* and *Trypanosoma equiperdum*** (FEBS 13319)

[*FEBS Letters* 335 (1993) 181–183]

Antonella Isacchi, Giacomo Bernardi, Giorgio Bernardi

*Laboratoire Génétique Moléculaire, Institut Jacques Monod, 2, Place Jussieu, F-75005 Paris, France*

In the Discussion of this paper it was mentioned that the present results corrected “an old report based on preparative CsCl banding [18] according to which the main band of nuclear DNA of *T. brucei* is centered at 1.703 g/cm<sup>3</sup>, with a shoulder at 1.702 g/cm<sup>3</sup>.” The reference quoted, Borst, P., Fase-Fowler, F. Frash, A.C.C., Hoeijmakers, J.H.J. and Weijers, P.J. (1980) *Mol. Biochem. Parasitol.* 1, 221–246, was, however, wrong.

The authors apologize to P. Borst et al. for misquoting them. So far, the authors have been unable to retrieve the right reference.

---

FEBS 16807

Corrigendum to: **Two distinct inwardly rectifying conductances are expressed in long term dibutyryl-cyclic-AMP treated rat cultured cortical astrocytes** (FEBS 15660)

[*FEBS Letters* 367 (1995) 319–325]\*

Stefano Ferroni<sup>a</sup>, Cristina Marchini<sup>a</sup>, Peter Schubert<sup>b</sup>, Carmela Rapisarda<sup>a</sup>

<sup>a</sup>*Department of Human and General Physiology, University of Bologna, Via San Donato 19/2, 40127 Bologna, Italy*

<sup>b</sup>*Max-Planck Institute for Psychiatry, Department of Neuromorphology, Martinsried, Germany*

The following corrections should have been made to the manuscript prior to publication.

Section 2.3. *Electrophysiological recordings*

The standard external solution of the KCl content is lacking at line 9. The composition of the used solution is (mM): 140 NaCl, 4 KCl, 2 CaCl<sub>2</sub>, 2 MgCl<sub>2</sub>, 5 TES, 5 EGTA, 5 glucose, buffered with NaOH at pH 7.3.

Section 3. **Results**

On page 323, lines 6–7 (right column) the used sodiumbutyrate concentration is 250 μM.

---

\*SSDI 0014-5793(95)00588-9

FEBS 16808

Erratum to: **Lipopolysaccharide treatment in vivo induces tissue expression of GTP cyclohydrolase mRNA** (FEBS 15761)

[FEBS Letters 368 (1995) 336–338]\*

Yoshiyuki Hattori<sup>a</sup>, Muneo Oka<sup>a</sup>, Kikuo Kasai<sup>a</sup>, Nobuo Nakanishi<sup>b</sup>, Shin-Ichi Shimoda<sup>a</sup><sup>a</sup>Department of Endocrinology, Dokkyo University School of Medicine, Mibu, Tochigi 321-02, Japan<sup>b</sup>Department of Biochemistry, Meikai University School of Dentistry, Sakado, Saitama 350-02, Japan

As the result of a clerical error Fig. 2 was published wrongly.

Please see below for the correct Fig. 2 plus legend.

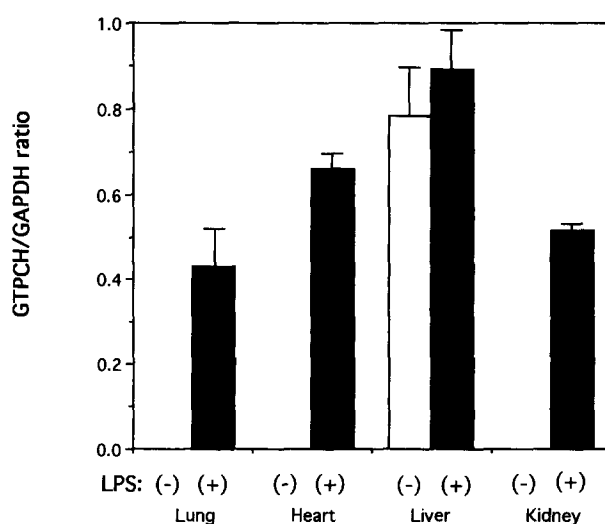


Fig. 2. Effects of LPS on GTPCH mRNA expression in various tissues. The intensity ratio of GTPCH to GAPDH was shown. Data are mean  $\pm$  S.E.M. of 3 animals (control: open columns, LPS-treated: closed columns). GTPCH/GAPDH in control lung, heart and kidney was not shown as the GTPCH signal was too low to be quantified.

---

FEBS 16809

Corrigendum to: **Effect of polyethylene glycol on the activity, intrinsic fluorescence, and oligomeric structure of castor seed cytosolic-1,6-bisphosphatase** (FEBS 15816)

[*FEBS Letters* 368 (1995) 559–562]\*

Richard J. Hodgson, William C. Plaxton

*Department of Biology and Biochemistry, Queen's University, Kingston, Canada, K7L 3N6*

On page 360, section 3.1, the last sentence of the first paragraph *should have read*: The  $I_{50}$  for F-2,6-P<sub>2</sub> at 50 and 5  $\mu$ M F-1,6-P<sub>2</sub> was 500 and 60 nM, respectively, in the presence of 0%, 10%, or 20% (w/v) PEG. (*500 instead of 50 nM*)

---

\*SSDI 0014-5793(95)00744-X

---

FEBS 16810

Erratum to: **A mutation in the 5' untranslated region of the human  $\alpha$ -galactosidase A gene in high-activity variants inhibits specific protein binding** (FEBS 15963)

[*FEBS Letters* 371 (1995) 181–184 ]\*

Zubaida Saifudeen<sup>a</sup>, Robert J. Desnick<sup>b</sup>, Melanie Ehrlich<sup>a,c</sup>

<sup>a</sup>*Molecular and Cellular Biology Program, Mount Sinai School of Medicine, New York, NY 10029, USA*

<sup>b</sup>*Department of Medical and Molecular Genetics, Mount Sinai School of Medicine, New York, NY 10029, USA*

<sup>c</sup>*Department of Biochemistry, Tulane Medical School, New Orleans, LA 70112, USA*

Affiliation *a* was assigned to the wrong Medical School and *should have read*:

<sup>a</sup>*Molecular and Cellular Biology Program, Tulane Medical School, New Orleans, LA 70112, USA*

---

\*SSDI 0014-5793(95)00891-8

FEBS 16811

Corrigendum to: **Classification of multi-helical DNA-binding domains and application to predict the DBD structures of  $\sigma$  factor, LysR, OmpR/PhoB, CENP-B, Rap1, and XylS/Ada/AraC (FEBS 16060)**

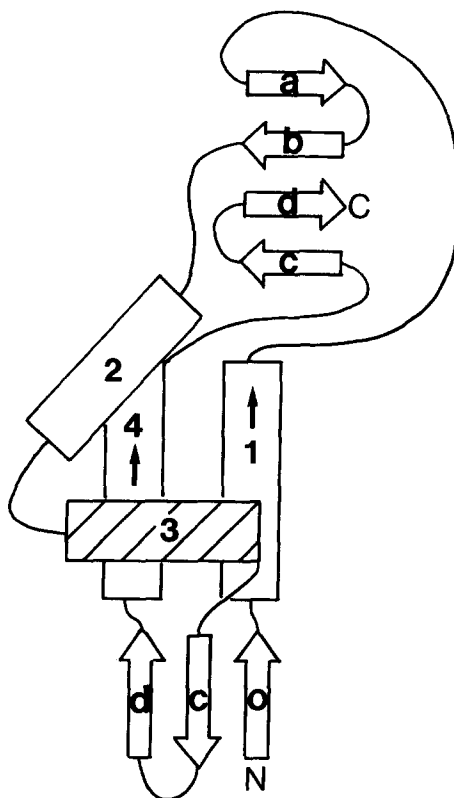
[*FEBS Letters* 372 (1995) 215–221]\*

Masashi Suzuki, Steven E. Brenner

*MRC Laboratory of Molecular Biology, Hills Road, Cambridge, CB2 2QH, UK*

Fig. 2j of this paper was wrongly drawn. One of the important points of this figure was to show that helices 1 and 4 are nearly parallel and can substitute for each other. The published figure satisfies this point but the two helices are placed the wrong way around. Helix 1 should be on the right and helix 4 should be on the left.

Please see below for the correct Fig. 2j.



FEBS 16812

Corrigendum to: **Molecular cloning, functional expression, and signal transduction of the GIP-receptor cloned from a human insulinoma** (FEBS 16078)

[FEBS Letters 373 (1995) 23–29]\*

Anja Volz<sup>a</sup>, Rüdiger Göke<sup>a</sup>, Brigitte Lankat-Buttgereit<sup>a</sup>, Hans-C. Fehmann<sup>a</sup>, Hans P. Bode<sup>b</sup>, Burkhard Göke<sup>a</sup>

<sup>a</sup>Clinical Research Unit for Gastrointestinal Endocrinology, Department of Internal Medicine, Philipps University of Marburg, 35033 Marburg, Germany

<sup>b</sup>Department of Pharmacology, Philipps University of Marburg, 35033 Marburg, Germany

A low-quality computer-generated Fig. 1 was published in the above paper.

Please see below for a better quality reproduction of the Northern blot to clearly demonstrate that the authors were able to determine the transcript size of 5.5 kb from total RNA of the insulinoma based upon a clear cut result in a Northern Blot rather than by simple guessing.

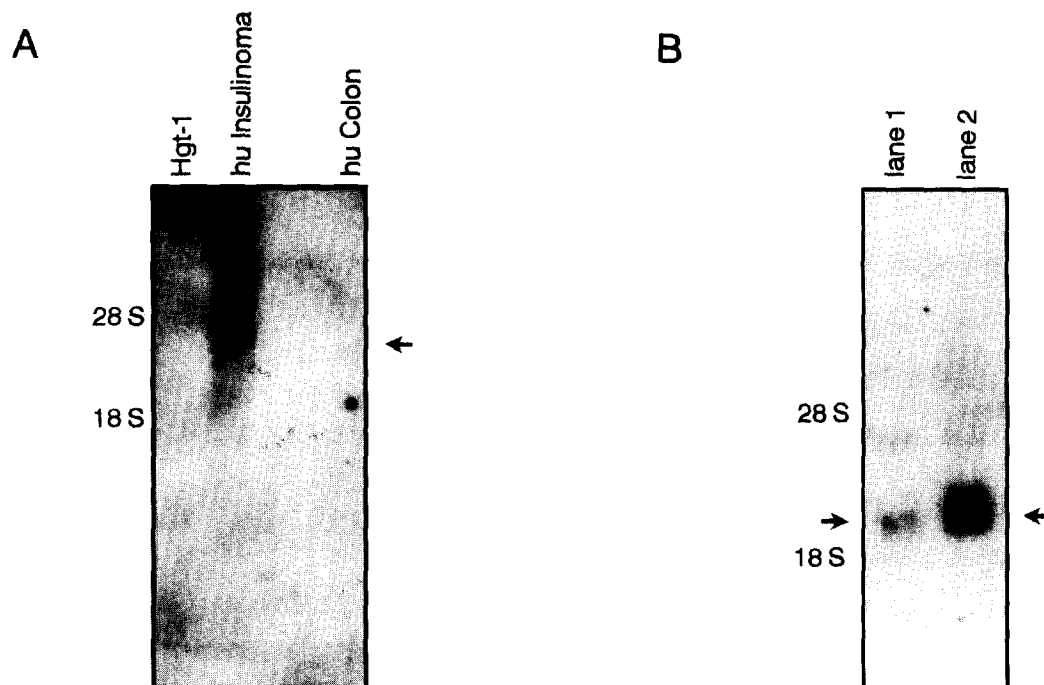


Fig. 1. Northern blot analysis of GIP receptor expression in (A) tissue of a human insulinoma, colon, stomach cancer HGT 1 cells, and (B) transfected CHL cells. A 1.0 kb fragment of the insulinoma-derived GIP receptor cDNA was utilized as probe. In (A) only total RNA from the insulinoma showed a transcript of 5.5 kb. In transfected CHL cells stably expressing the GIP receptor (B) the expected signal at 2.6 kb was detected (arrows) for both the intact and the cDNA containing the alternatively spliced IL462 fragment.

---

FEBS 16813

Erratum to: **Stimulation of cloned human glucagon-like peptide 1 receptor expressed in HEK 293 cells induces cAMP-dependent activation of calcium-induced calcium release** (FEBS 16142)

[*FEBS Letters* 373 (1995) 182–186]\*

Jesper Gromada<sup>a</sup>, Patrik Rorsman<sup>a</sup>, Steen Dissing<sup>b</sup>, Birgitte S. Wulff<sup>c</sup>

<sup>a</sup>*Islet Cell Physiology, Symbion Science Park, Novo Nordisk A/S, Fruebjergvej 3, DK-2100 Copenhagen, Denmark*

<sup>b</sup>*Department of Medical Physiology, The Panum Institute, University of Copenhagen, Blegdamsvej 3, DK-2200 Copenhagen, Denmark*

<sup>c</sup>*Department of Molecular Pharmacology, Novo Nordisk A/S, Novo Allé, DK-2880 Bagsvaerd, Denmark*

As the result of a handling error during the final stages of printing Figs. 2 and 4 were interchanged.

Figures 2 and 4, therefore, should be interchanged without interchanging the legends.

---

\*SSDI 0014-5793(95)01070-X

---

FEBS 16814

Corrigendum to: **Characterisation of a synergohymenotropic toxin produced by *Staphylococcus intermedius*** (FEBS 16331)

[*FEBS Letters* 376 (1995) 135–140]\*

G. Prévost, T. Bouakham, Y. Piémont, H. Monteil

*Institut de Bacteriologie de la Faculté de Médecine, Université Louis Pasteur, 3, rue Koeberlé, 67000 Strasbourg, France*

In the original manuscript the legends to figures 1, 2 and 3 were interchanged.

The legends of Figures 1, 2 and 3 *should be read as* Figures 3, 1 and 2, respectively.

---

\*SSDI 0014-5793(95)01260-5